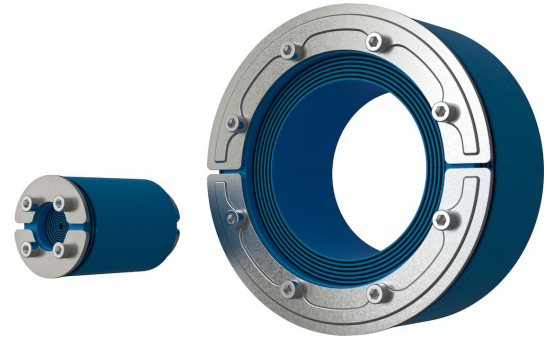




Sello Roxtec RS OMD

Sello con exterior adaptable para adaptarse a tamaños de collarín no estándar.

El Roxtec RS OMD es un sello para cables o tuberías individuales en collarines de metal. El sello de entrada tiene dos mitades con capas retirables, con lo que se puede adaptar a cables y tuberías de diferentes tamaños. El sello también tiene capas en el exterior, para adaptarse a aberturas y tamaños de collarín no estándar. El diseño del sello hace más fácil la instalación en torno a cables o tuberías existentes.



- Resistente a roedores
- Perfecto para renovaciones
- Rápido y sencillo de instalar

Características del producto



Calificación contra incendios



Estanco al agua



Estanco a gases

Estructura de instalación



Metal



Hormigón

Tipo de montaje



Hueco existente



Manguito existente

Calificaciones y certificados

Fuego

- CLASE A de acuerdo al estándar FTP IMO 2010
- Clasificación E/EI según EN 13501

Estanquidad

- Gas: 2,67 bar (catastrófico)
- Agua: 4 bar (catastrófico)

Datos de los componentes de sellado

Componentes de sellado



Sellos RS OMD



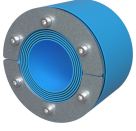
Lubricante Roxtec

Para obtener información detallada, visite [roxtec.com](https://www.roxtec.com).

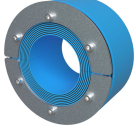


Kits de sellos preconfigurados

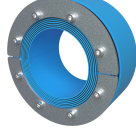
mm/kg



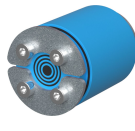
RS 100 OMD AISI316
WOC



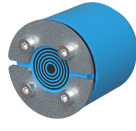
RS 125 OMD AISI316
WOC



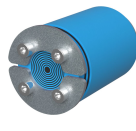
RS 150 OMD AISI316
WOC



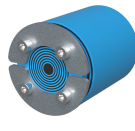
RS 25 OMD AISI316



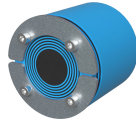
RS 31 OMD AISI316



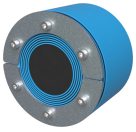
RS 43 OMD AISI316



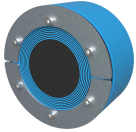
RS 50 OMD AISI316



RS 68 OMD AISI316



RS 100 OMD AISI316



RS 125 OMD AISI316

Título	Configuración	Dimensiones de abertura ∅	Peso	N.º de art.
RS 100 OMD AISI316 WOC	1x (48.0-70.0)	101 - 108	1	RSO0001001021
RS 125 OMD AISI316 WOC	1x (66.0-98.0)	126 - 143	1.6	RSO0001251021
RS 150 OMD AISI316 WOC	1x (93.0-119.0)	151 - 168	2	RSO0001501021
RS 25 OMD AISI316	1x (3.6-12.0)	26 - 30	0.08	RSO0100251021
RS 31 OMD AISI316	1x (4.0-17.0)	32 - 35.5	0.09	RSO0100311021
RS 43 OMD AISI316	1x (4.0-23.0)	44 - 51	0.32	RSO0100431021
RS 50 OMD AISI316	1x (8.0-30.0)	51 - 58	0.41	RSO0100501021
RS 68 OMD AISI316	1x (26.0-48.0)	69 - 76.5	0.6	RSO0100681021
RS 100 OMD AISI316	1x (48.0-70.0)	101 - 108	1.2	RSO0101001021
RS 125 OMD AISI316	1x (66.0-98.0)	126 - 143	2	RSO0101251021

The product information provided by Roxtec does not release the purchaser of the Roxtec system, or part thereof, from the obligation to independently determine the suitability of the products for the intended process, installation and/or use.

Roxtec gives no guarantee for the Roxtec system or any part thereof and assumes no liability for any loss or damage whatsoever, whether direct, indirect, consequential, loss of profit or otherwise, occurred or caused by the Roxtec systems or installations containing components not manufactured by an authorized manufacturer and/or occurred or caused by the use of the Roxtec system in a manner or for an application other than for which the Roxtec system was designed or intended.

Roxtec expressly excludes any implied warranties of merchantability and fitness for a particular purpose and all other express or implied representations and warranties provided by statute or common law. User determines suitability of the Roxtec system for intended use and assumes all risk and liability in connection therewith. In no event shall Roxtec be liable for indirect, consequential, punitive, special, exemplary or incidental damages or losses.

The Roxtec products are offered and sold in accordance with the conditions of the Roxtec General Terms of Sales. The latest version of the Roxtec General Terms of Sales can be downloaded from <https://www.roxtec.com/en/about-us/about-roxtec/general-terms-of-sales/>

We reserve the right to make changes to the product and technical information without further notice. Any errors in print or entry are no claims for indemnity. The content of this publication is the property of Roxtec International AB and is protected by copyright.

This document was generated on: 2024-04-05